

Wandsworth Society

Newsletter November 2018

Could this part of Wandsworth Common be sacrificed to ease local traffic flows?



Philip Whyte comments on some local issues. At our recent **Roads & Transport** group meeting we learned that the Council is proposing to alter the junction of Trinity Road and Burntwood Lane and Bellevue Road (see picture), to 'improve traffic flow at peak times'. A 'second phase' could involve surrendering part of the Common to new traffic lanes. We have sought an early meeting with Council officers to explore the rationale and current position and offer our views.

The Roads & Transport group also noted the recent advice on the Council website about the Armoury Way 'gyratory' realignment. The plan earlier announced by TfL (Transport for London) is evidently now subject to revision - which, if all is well after land acquisition, will mean a revised start in 2021 - or thereabouts. Don't hold your breath!

Our **Planning** group scrutinises local planning applications of interest and sometimes attends 'consultations' before an application is submitted. The Council's workload (and ours!) does not seem to diminish: the number of "live"

cases listed weekly has not reduced significantly in recent months. We intend to comment on:

Ferrier Street (Wandsworth Town Station) As reported in the October Newsletter, current proposals are for mixed work and residential space. We are supportive of the significantly increased work space and the residential element. But a building close to the station's piazza entrance is proposed of nine storeys - significantly exceeding the recommended height in the Council's own guidance (five storeys) - the immediately surrounding environment is now no more than three.

Jaggard Way (east of Wandsworth Common Station) A public exhibition of revised proposals shows a mix of workspace and residential use. We do not believe the revisions are acceptable. The site would be too congested to provide for dual use (unlike Ferrier Street). The service areas are insufficient for the vehicular traffic generated for domestic and business use. Given the amenity required for the residential properties, it is likely that a working hours restriction would be imposed - with too little offloading area for 'workspace traffic' and virtually no open space at ground level for residents. We shall object accordingly.

A new application (2018/4176) is for premises in **Bendon Valley (off Garratt Lane)** where the current trampoline centre (surely well known to members, if perhaps less familiar when it housed Mecca Bingo?!). This application is also for extensive buildings west towards the Wandle. It includes the replacement and extension of current work space (good) and - can you believe it?! - 353 new flats in buildings up to 14 storeys, some overlooking the river. The height is excessive.

The Society's Soirée

7 October

In their elegant gowns three musical Graces visited 14 Patten Road and dazzled Wandsworth Society patrons with their sparkling performance. Christina McMaster on piano, Charis Jenson on violin and Kirsten Jenson (her twin sister) on cello started the programme with Mozart's piano trio in E Major K542, played with charm and vivacity. Christina followed this with two short studies by Debussy, composed in a more abstract style towards the end of his life; the second piece was particularly remarkable, as it was for eight fingers only! Keeping with Debussy, Christina and Charis rounded off the first half of the evening with a gentle haunting meditation of great beauty.

The second part of the programme was devoted to Schumann's Piano Trio No. 1 in D Minor Op 63, a substantial work in four

movements that spanned every shade of Romanticism. It was played with dizzying brilliance and passion - and acclaimed with a great 'Hurrah!' from the audience. As an encore, Christina, Charis and Kirsten gave us the spiky and humorous Variation on a Viennese 'Heurigen' Melody by Hans Gal, a composer born in Mainz who fled to Edinburgh during war, whose music our performers loved and were keen to make better known. The final triumphant 'encore' was a part jazz/ part classical solo by Kirsten, who produced amazing slithery sounds on her cello, plus thumps and rattles - which she assured us did no harm to her instrument!

Three very talented musicians, giving us a spirited and exhilarating evening of great charm in the generous surroundings of Stefan and Arjan Byron's beautiful home - what more could one ask for?

Helen Blumer

A walk to Harmondsworth and West Drayton

14 October

London's villages can still be identified whilst travelling around the suburbs. Harmondsworth and West Drayton are such a pair in west London. The former, sandwiched between the M4 and Heathrow, is surprisingly rural in feel; the latter, lying just north of the M4, submerged by mid and post-war estates, survives complete with a large village green surrounded by several attractive listed properties.

The purpose of our Society visit was to see for ourselves the site planned for the third Heathrow runway. While visiting Harmondsworth's Grade I Listed, cathedral sized, barn (dated 1427), we met a resident of the village whose last twenty-five years have been ones of constant friction, seeing off three attempts to have the runway built. Attempt three remains in limbo. We learned, to our astonishment, that the new runway would be built within 250 metres of the barn, the mediaeval church and the few houses to remain in the planned, truncated village. The

proposed runway would accommodate all the current, giant passenger and freight jets whose thrust and noise one imagines would blow the fragile village away.

We crossed over the River Colne, to walk the landscaped country park at 'Waterside', ironically designed and built for BAA, to learn that it would all, together with nearby Sibson village, be eradicated for the third runway.

A future 250,000 aircraft movements are planned, but, whilst standing on a bridge overlooking the M4, and having that day experienced a reduced train service from Paddington, one was forced to reflect on how local communities, the nearby open environment and the transport infrastructure could cope with such expansion, bearing in mind that the additional generated road and train traffic would have to squeeze into the already congested road and rail network.

Our party left the villages with much to ponder over, including why HS2 is bypassing Heathrow and why Crossrail 1 does not appear to serve Terminal 5?

John Dawson

Our Executive Committee, Society officers and sub-committee leaders

Chair Margaret Romanski
30 Wandle Road, SW17 7DW
07815 937779
m.romanski@talk21.com

Vice-Chair David Kirk
15 Aspley Road, SW18 2DB
020 8874 9167
davidcameronkirk@hotmail.com

Secretary John Dawson
210 Beechcroft Road, SW17 7DP
020 8772 4282

Treasurer Norman Holmes
Flat 7 Tiffany Heights,
59 Standen Road, SW18 5TF
020 8877 9616

Membership Secretary Gill Gray
Studio 8, Royal Victoria Patriotic
Building, SW18 3SX
020 8870 4567

Iain Gray ('Bedside' editor)
contact details as for Gill Gray

Bruce St Julian-Bown (Open Spaces lead)
39c Heathfield Road, SW18 2PH
020 8874 6966

Philip Whyte (Planning Group lead)
49 West Side, SW18 2EE
020 8874 4745

Other sub-committee leads

Events Team

Caroline Pook
caroline@pookfamily.co.uk

Roads & Transport Group

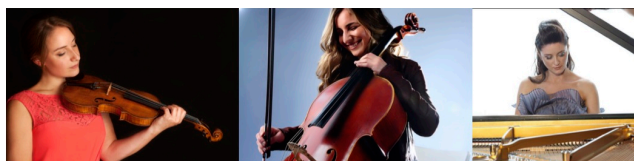
Harry Waddingham
61 Magdalen Road, SW18 3NE
020 8874 8784

Editorial

A short 'editorial', but one that, serendipitously, perhaps reflects rather well the range of our Society's concerns and interests. Those include of course current developments affecting our 'local' environment - but not just our immediate surroundings. The prospective Heathrow expansion (see John Dawson's article), for example, has 'local' implications - if it happens! More locally, Council plans for 'traffic easing' in our area deserve careful scrutiny, as we shall give them.

There will be more reports of recent Society events in our January-February Newsletter. 'Rubbish and recycling' is a current theme, along with 'heritage'. Our grateful thanks to Events team colleagues for orchestrating such an excellent programme of Society activities..

October highlights included a joint gathering with the Putney Society, organised by the Wandsworth Historical Society, at St Mary's Church, Putney - packed with an audience of at least 250 people, to hear a lecture by Professor Diarmaid MacCulloch on Thomas Cromwell, 'local boy', and 'enforcer' of Henry VIII's Reformation. The young musicians who performed at our October soirée received a 'virtual' standing ovation (see Helen Blumer's report).



Too early for Christmas greetings, I think. The Society's will as usual take the form of the many delights to be found in our 'Bedside' edition, delivered to all our members.

David Kirk

Warm Congratulations to two Society members who both received Wandsworth Civic Awards at a Town Hall ceremony on 13 November - Liliias Gillies, "the driving force behind the Wandsworth Older People's Forum and Network, for more than two decades" and Trevor Grubb who "has devoted many years to working with disadvantaged young people throughout Wandsworth".

The Society walks and talks ... *and parties*

Friday 7 December

The
Wandsworth Society

Christmas Party

7.30pm, Friday 7 December

St Anne's Church Hall, St Ann's Crescent,
SW18 2RS

Our musical entertainers this year will be Chris Beaumont on xylophone and glockenspiel, accompanied by Derek Carden on piano who offer music for all ears and ages.



They come to us highly recommended, this will be serious musical fun of a sort that Society members are likely to enjoy.

Supper and a glass of wine, beer or soft drink are included in the price of £15. And excellent conversation of course, plus the opportunity to meet Society members you don't know - these delights are guaranteed...

Advance booking with Caroline Pook is essential - call 07836 254 065 (text or voice mail) or sign up at eventsbookingsws@gmail.com.

Payment at the door on the night.

Thursday 10 January

7.45 for 8pm

West Side Church, Melody Road/Allfarthing Lane, SW18 2QQ

Battersea Power Station - past, present and future

Speakers will include Jeanne Rathbone and Alex Baker. Further details to be announced.



image Gaetan Lee

Thursday 14 February

7.45 for 8pm

West Side Church, Melody Road/Allfarthing Lane, SW18 2QQ

Loving our Common

Details to be announced.

Society walks and visits

Our Events team is planning further walks and outings (members' suggestions always welcome) - to include a repeat of much praised visits to the new Pocket development (see October Newsletter) and, more recently, the Western Riverside Waste Authority on Smugglers Way. We hope to fix dates shortly - 'first come, first served' and we already have a number of 'expressions of interest' - those on our list will be informed of the date(s) as soon as fixed. So, if you have not already notified us, please register your interest with Caroline Pook via 07836 254065 (text or voice mail) or on eventbookingsws@gmail.com.

Also of interest:

Thursday 29 November

6.30 for 7pm

St Mary's Church, Battersea Church Road,
SW11 3NA

The Rotary Club of Battersea Park invites us to a presentation by

**Jeanne Bryant, Governor of HM Prison
Wandsworth and Probation Service.**

Her talk to the Society last year impressed a 'full house' of about 80 people. This event, being held in aid of Rotary charitable projects, will include a recital from the works of some famous ex-offenders. The cost is £15 a head, to include refreshments. For further details and booking, go to events@batterseaparkrotaryclub.org.uk.